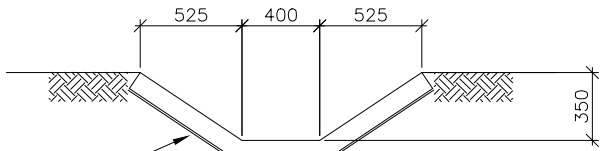


NOTE:  $H = D + W + 200$   
 $= \text{DIAMETER(int.)} + \text{WALL THICKNESS} + 200$

HEADWALL (TYPICAL)

1: 25

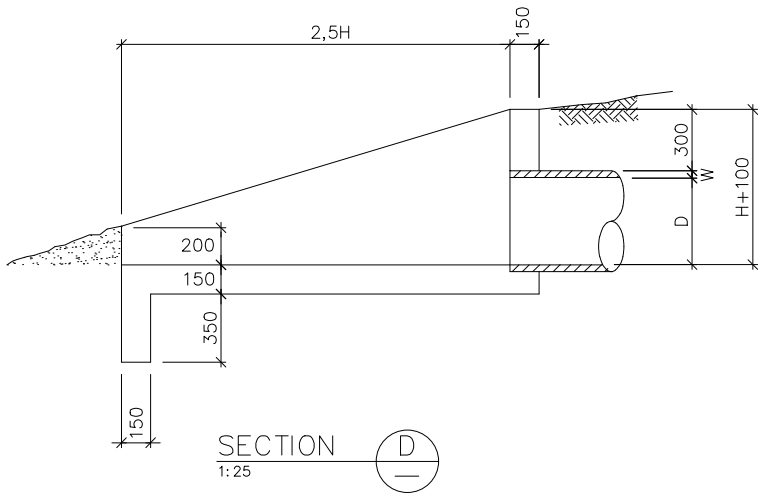


POLYETHYLENE SHEETING (250  $\mu\text{m}$ )

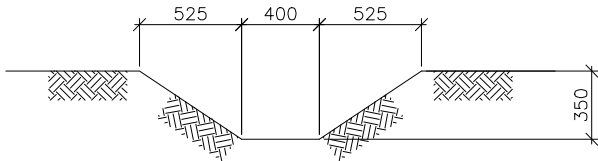
CAST IN 4m SECTIONS WITH 10mm  
SOFTBOARD EXPANSION JOINTS

TYPICAL SECTION THROUGH CONCRETE LINED  
STORM WATER CHANNEL

1: 25

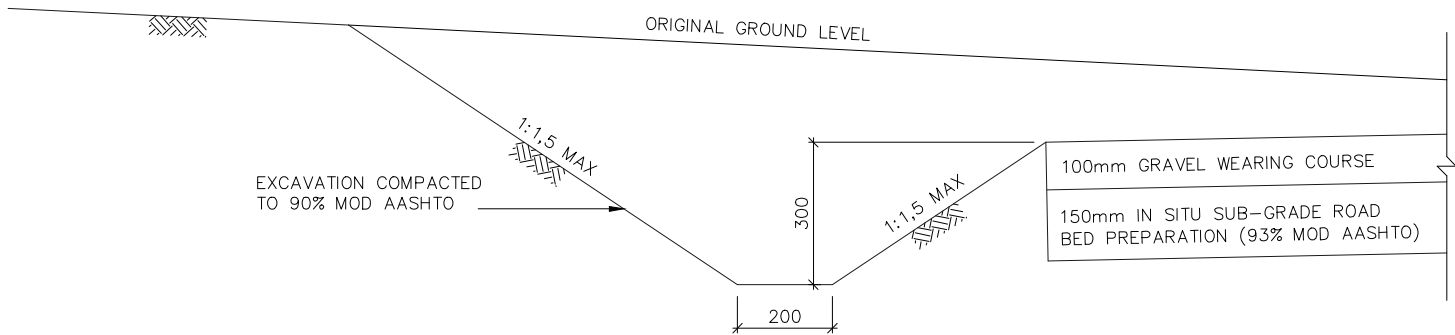


SECTION D  
1: 25



TYPICAL SECTION THROUGH  
STORM WATER CHANNEL

1: 25



TYPICAL SECTION THROUGH SIDE DRAIN

1: 10

REFERENCES

REVISIONS

No	Date	Description	By

Client	EMALAHLENI LOCAL MUNICIPALITY
Project	CONSTRUCTION OF BLESBOKLAGTE CEMETERY
Drawing Title	TYPICAL SECTIONS: STORMWATER
Scale	AS SHOWN
	A3

<b>btw</b> BTW & Associates (Pty) Ltd	
Mpumalanga 32 Lowe Street, Fransville, Emalahleni, PO Box 13614 Witbank, 1035 Tel No: (013) 697 6050 Fax No: (013) 697 6060 e-mail: highveld@btw.co.za	Gauteng 881 Old Farm Road Faerie Glen, Pretoria PostNet Suite 337 Private Bag X20009 Garsfontein, 0042 Tel No: (012) 991 0161 Fax No: (012) 991 6222 e-mail: gauteng@btw.co.za
Designed by: M.M	Reviewed by: J.L.B
Drawn by: M.M	Checked by: J.L.B
Project Manager: J.L.B	
Drawing No. 20236/04/03	Revision 0
Client Project No.	