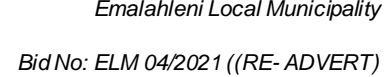



CONTRACT NO: ELM 04/2021 (RE- ADVERT)
CONSTRUCTION WORK AT LEEUWPOORT LANDFILL SITE
SCHEDULE OF QUANTITIES
SECTION 1: GENERAL

ITEM NO	PAYMENT	DESCRIPTION	UNIT	QTY	RATE	AMOUNT	
						R	c
1	SABS 1200 A	SECTION 1: PRELIMINARY AND GENERAL					
1.1	8.3	FIXED-CHARGE ITEMS					
1.1.1	8.3.1	Contractual Requirements	Sum	1.0			
	8.3.2	Establish Facilities on the Site :					
		a) Facilities for Engineer (SABS 1200 AB)					
1.1.2		Office					
1.1.3		Telephone	Sum	1.0			
1.1.4		Two Name boards	No	2.0			
		a) Facilities for Contractor					
1.1.5		Offices and storage sheds	Sum	1.0			
1.1.6		Ablution and latrine facilities	Sum	1.0			
1.1.7		Tools and equipment	Sum	1.0			
1.1.8		Water supplies,electric power and communications	Sum	1.0			
1.1.9		Allowance to conform to the Occupation Heath and Safety Act 1993	Sum	1.0			
1.1.10		Allowance to conform with NEMA Environmental, Water and Air Quality.	Sum	1.0			
1.1.11	8.3.3	Other fixed-charge obligations	Sum	1.0			
1.1.12	8.3.4	Remove Contractor's Site establishment on completion	Sum	1.0			
1.2	8.4	TIME-RELATED ITEMS					
1.2.1	8.4.1	Contractual Requirements	Month	3.0			
	8.4.2	Operate and maintain facilities on the Site:					
	8.4.2.2	a) Facilities for Contractor for duration of construction,except where otherwise stated					
1.2.2		Offices and storage sheds	Month	3.0			
1.2.3		Ablution and latrine facilities	Month	3.0			
1.2.4		Tools and equipment	Month	3.0			
TOTAL CARRIED FORWARD							


CONTRACT NO: ELM 04/2021 (RE- ADVERT)
CONSTRUCTION WORK AT LEEUWPOORT LANDFILL SITE
SCHEDULE OF QUANTITIES
SECTION 1: GENERAL

ITEM NO	PAYMENT	DESCRIPTION	UNIT	QTY	RATE	AMOUNT	
						R	c
BROUGHT FORWARD							
1.2.5		Water supplies,electric power and communications	Month	3.0			
1.2.6		Allowance to conform to the Occupation Heath and Safety Act 1993	Month	3.0			
1.2.7		Allowance to conform with NEMA Environmental, Water and Air Quality.	Month	3.0			
1.2.8	8.4.3	Supervision	Month	3.0			
1.2.9		Salary for Community Liaison Officer	Prov Sum	1.0	19,500.0		
1.2.10		Administration fees - Salary CLO - Adjustment to item 1.2.9	%	19,500.0			
1.2.11	8.4.4	Company and head office overhead costs	Month	3.0			
1.2.12	8.4.5	Other time-related obligations	Month	3.0			
1.3	8.8.5	LAND SURVEY ACT					
1.3.1		a) Search for and record trigonometrical survey beacons, bench marks and plot boundary pegs, and expose on completion of Works	Sum	1.0			
1.3.2		b) Protect beacons, etc., located under item 1.2.10 and reposition or re-establish, as ordered, the same by a registered Land Surveyor on completion of the Works	Sum	1.0			
1.4	8.7	DAY WORKS					
1.4.1		Labour	Prov Sum	1.0	50,000.00		
1.4.2		Percentage adjustment to item 1.2.12 for labour	%	50,000.0			
1.4.3		Materials	Prov Sum	1.0	50,000.00		
1.4.4		Percentage adjustment to item 1.2.14 for materials	%	50,000.0			
1.4.5		Plant	Prov Sum	1.0	50,000.00		
1.4.6		Percentage adjustment to item 1.2.16 for plant	%	50,000.0			
1.5	8.8	TEMPORARY WORKS					
TOTAL CARRIED FORWARD							



CONSTRUCTION WORK AT LEEUWPOORT LANDFILL SITE

SECTION 1: GENERAL

C2.2.4


CONTRACT NO: ELM 04/2021 (RE- ADVERT)
CONSTRUCTION WORK AT LEEUWPOORT LANDFILL SITE
SCHEDULE OF QUANTITIES
SECTION 2: MAIN BUILDING

ITEM NO	PAYMENT	DESCRIPTION	UNIT	QTY	RATE	AMOUNT	
						R	c
2		SECTION 2: MAIN BUILDING					
2.1		CLEANING AND CLEARING					
		Cleaning the Stormwater pipe outlet and the Paved parking that is completely covered with sand	m ²	324.0			
		Site Clearing	m ²	1,200.0			
		PAINTING					
		Office - inside rooms					
2.1.1		Walls - Champion Extra Thick PVA White	m ²	196.5			
2.1.2		Walls - Champion Extra Thick PVA Grey	m ²	22.5			
2.1.3		Ceilings	m ²			Rate Only	
2.1.4		Door and window frames - Red Oxide	m ²	6.3			
2.1.5		Fisher board - Champion Extra Thick PVA White	m ²	0.6			
		Doors - Duram Gloss Enamel White Paint	No	6.0			
2.2	8,8	IRONMONGERY					
2.2.1		STEEL DOOR FRAMES INCLUDING LINTOL D2 (800 x 2100) for 230 wall STEEL WINDOW FRAMES INCLUDING BURGLAR PROOFING, GLAZING, SILLS AND LINTOLS ND4F (1151 x 1245)	No			Rate Only	
2.2.2		Window Steel Standard profile ,ND4F (1486 x 1220)	No	1.0			
2.3		WINDOW BUGLAR					
2.3.1		Installing Round Bar 6mm/6m (1.4kg) steel window buglar	Sum	1.0			
		TOILET TANK					
2.4.3		Installation of 2x Toilet tank lids	No	2.0			
		GEYSER					
2.4.4		Installation of Geyser with all associated copper pipes complete	No	1.0			
2.5		ABLUTION BLOCK AND STORAGE ROOM					
TOTAL CARRIED FORWARD							


CONTRACT NO: ELM 04/2021 (RE- ADVERT)
CONSTRUCTION WORK AT LEEUWPOORT LANDFILL SITE
SCHEDULE OF QUANTITIES
SECTION 2: MAIN BUILDING

ITEM NO	PAYMENT	DESCRIPTION	UNIT	QTY	RATE	AMOUNT	
						R	c
BROUGHT FORWARD							
2.5.1		Installation of damaged rain water goods (Fascias, gutter and downpipes)					
		Gutter Galv (100 X 75mm X 6m)	No	1.0			
		Fascia board Chromadek Steel 3.6m	No	1.0			
		Down pipe - Galvanised Steel, round 100mmX75mmX2.7m	No	1.0			
2.6		ROOFING					
2.6.1		Rhino Cornice 75mm/ 3.0m	No	5.0			
2.6.2		Repairing of damaged roof (6m Purlin; timber SABS 50x76 6.0m; 4x corrugated iron)	Sum	1.0			
2.7		TILING					
2.7.1		Wall tiles (glazed ceramic) white	m²			Rate Only	
2.7.2		Ceramic floor tiles 350mm X 350mm or equal approved	m²	6.0			
2.8	1200D	APRON AROUND THE BUILDING					
2.8.1	PSD 8.3.3	1,5m Concrete Apron Around Building	m³	6.0			
2.9	SANS 1200G 8.2	WASHBAY - FORMWORK					
	8.2.1	Repairing the cracked concrete wash bay - SMOOTH FORMWORK (measured to 150mm below FGL)					
2.9.1		Sides of washbay sump	m³	12.0			
2.10	1200C	BERMS					
2.10.1		Construction of a berm(earth berm) alongside the fence 800mm X 500mm	m	800			
2.10.2		Construction of a berm (earth berm) alongside the entrance 800mm X800mm	m	29.0			
2.11	1200D	DRIFT					
2.11.1	8.3.1.2	Construction of a concrete SW Channel , See Type 3 on Drawing 06	m³	40			
2.12		ROADBED					
TOTAL CARRIED FORWARD							


CONTRACT NO: ELM 04/2021 (RE- ADVERT)
CONSTRUCTION WORK AT LEEUWPOORT LANDFILL SITE
SCHEDULE OF QUANTITIES
SECTION 2: MAIN BUILDING

ITEM NO	PAYMENT	DESCRIPTION	UNIT	QTY	RATE	AMOUNT	
						R	c
BROUGHT FORWARD							
2.12.1	8.3.3(a)	Road-bed preparation (150 mm thick) Rip and recompact insitu material to 93% Mod. ASSHTO maximum density	m³	140			
2.13		SUBBASE					
2.13.1	8.3.1	Construct subbase with C4 material from commercial sources, shape and compact to 95% Mod. ASSHTO density	m³			Rate Only	
2.14		BASE					
2.14.1	8.3.1	Construct base with C4 material, shape and compact to 97% Mod. ASSHTO density	m³			Rate Only	
2.14.2	8.3.5	Process base material by means of stabilising	m³			Rate Only	
2.14.3	8.3.8	Stabilising agent: Portland blast furnace cement (3%)	t			Rate Only	
2.14.4	8.3.9	Extra over for hauling material in excess of the freehaul are	m3.km			Rate Only	
2.15	1200MJ	PAVING					
	8.2.2	Supply, lay, joint & bed on 20mm river sand, 80mm grey interlocking paving blocks Type S-A (Only paving blocks which the SANS mark will be accepted)					
2.15.1		Supply, lay, joint & bed 80mm grey interlocking paving blocks at the parking	m²	36.0			
2.15.2		Supply, lay, joint & bed 80mm grey interlocking paving blocks at the entrance	m²	108.0			
2.15.3		Supply, lay, joint & bed 80mm grey interlocking paving blocks next to the Weighbridge	m²	172.8			
2.16	1200MK 8.2.2	KERBING					
2.16.1		Fig 8c x 330mm	m	11.0		Rate Only	
2.16.2		Fig 8c (1m long)	m	3.0		Rate Only	
2.16.3		Transition kerb	m	1		Rate Only	
2.17		DRAINS					
TOTAL CARRIED FORWARD							



CONTRACT NO: ELM 04/2021 (RE- ADVERT)

CONSTRUCTION WORK AT LEEUWPOORT LANDFILL SITE

SCHEDULE OF QUANTITIES

SECTION 2: MAIN BUILDING

ITEM NO	PAYMENT	DESCRIPTION	UNIT	QTY	RATE	AMOUNT	
						R	c
BROUGHT FORWARD							
2.17.1		Excavate, trim and compact all materials to form side drains at boundry as shown on the drawings, including removal of surplus material	m			Rate Only	
2.17.2		Cut to fill, shape and compact 3m wide berms as per drawing	m²			Rate Only	
2.17.3		Construct berm 3m wide from fill material obtained from stock pile	m²			Rate Only	
2.18	SABS 1200MM	PERMANENT ROAD SIGNS					
	8.3.1	SIGN FACES WITH PAINTED BACKGROUND, PAINTED SYMBOLS, CHARACTERS, LEGEND, BORDERS AND SIGNBORDS CONSTRUCTED FROM: ALUMINIUM SHEET (2mm THICK) OF AREA OVER AND UP TO					
	(a)	ALUMINIUM SHEET (2mm THICK) OF AREA OVER AND UP TO					
2.18.1		0-2 m2	m²			Rate Only	
2.18.2	8.3.2	Provision and application for Retro reflective characters and symbols for road signs above	Prov Sum			Rate Only	
2.18.3		Overheads, charges and profit on above item	%			Rate Only	
2.18.4	8.3.3	100mm diameter. D-shaped steel tubing sign supports	No			Rate Only	
2.18.5	8.3.4	Excavation and concreting for sign supports (Grade 15/20 concrete)	m³			Rate Only	
TOTAL CARRIED FORWARD TO SUMMARY							


CONTRACT NO: ELM 04/2021 (RE- ADVERT)
CONSTRUCTION WORK AT LEEUWPOORT LANDFILL SITE
SCHEDULE OF QUANTITIES
SECTION 3: GUARD HOUSE AND ENTRANCE

ITEM NO	PAYMENT	DESCRIPTION	UNIT	QTY	RATE	AMOUNT	
						R	c
3		SECTION 3: GUARD HOUSE AND ENTRANCE					
3.1		FENCING					
3.1.1		Addition of Coil Type Concertina wire on existing fence	m	200.0			
		Blade Length: 10mm-20mm Blade Thickness: 0.45mm Blade Width: 13mm-21mm Blade Separation: 12mm-37mm Diameter of the coil:73cm-98cm					
3.1.2		Supply and Installation of 6m concrete palisade fence complete	m	1,800.0			
3.2		ELECTRICITY					
3.2.1		Installation of DB Box complete	Sum	1.0			
3.2.2		Installation of Control box with 4 Core (45m) cable complete	No	1.0			
3.2.3		Supply and Installation of 50kVA Transformer complete	No	1.0			
3.3		GATE					
3.3.1		Supply and Installation of gate steel rail for the sliding gate (7m x 0,5m) complete	m	14.0			
3.3.2		Supply and Installation of 6m motor rail complete	m	6.0			
3.4		HIGH LEVEL TANK					
3.4.1		Supply and Install Floating Ballcock water valve	No	1.0			
3.4.2		Supply and Install pipe for transferring water from the tank to the trucks	Sum	1.0			
3.5		PLANT PARKING					
3.5.1		Installation of Fence Welded Razor Wire Flat Wrap (700mm x 15m) complete	m	77.0			
3.5.2		Supply and lay 12mm thick concrete stones	t	2.000			
3.5.3		Gate D/MESH 32x50mm DBL Leaf 3.0 x 1.8m Complete	No	1.0			
TOTAL CARRIED FORWARD							


CONTRACT NO: ELM 04/2021 (RE- ADVERT)
CONSTRUCTION WORK AT LEEUWPOORT LANDFILL SITE
SCHEDULE OF QUANTITIES
SECTION 3: GUARD HOUSE AND ENTRANCE

ITEM NO	PAYMENT	DESCRIPTION	UNIT	QTY	RATE	AMOUNT	
						R	c
BROUGHT FORWARD							
3.6		LIGHTING					
3.6.1		Supply and Install 20meter solar powered high mast lights or similar approved complete with concrete plinths and earthworks	No	4.0			
3.7		BOOMGATE					
3.7.1		Supply and Install 2,5m Tyre-spike automatic boomgates complete with all electronics, logic and loop detector, including testing thereof	No	2.0			
3.7.2		Supply and Install D2 Turbo Sliding Gate Motor Kit complete	No	2.0			
		Kit should include:					
		1 x gate motor (sliding)					
		2 x 4 buttons remote					
		1 x battery 7ah 12V					
		1 x 6.2m steel rack					
3.7.3		Supply and Install a Turnstar or similar approved 2.5m manual vehicle barrier/ boomgate complete with round powder coated alluminium barrier arm, including testing thereof.	No	2.0			
3.7.4		Supply and installation of (2x) two CCTV units with 6 cameras each at the gate entrance	No	2.0			
3.7.5		Percentage adjustment to item 3.2.2 for the CCTV units	%	156,000.0			
3.7.6		Cabling and Electrical Installation of the guard house	Sum	1.0			
3.7.7		Percentage adjustment to item 3.2.4 for Provisional Sum	%	30,000.0			
TOTAL CARRIED FORWARD TO SUMMARY							



CONTRACT NO: ELM 04/2021 (RE- ADVERT)

CONSTRUCTION WORK AT LEEUWPOORT LANDFILL SITE

SCHEDULE OF QUANTITIES

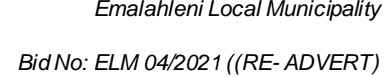
SECTION 4: CONSTRUCTION OF A WEIGHBRIDGE

ITEM NO	PAYMENT	DESCRIPTION	UNIT	QTY	RATE	AMOUNT	
						R	c
4		SECTION 4: CONSTRUCTION OF A 24M GALVANIZED WEIGHBRIDGE					
4.1		24M GALVANIZED WEIGHBRIDGE					
4.1.1		Supply and Install, Test and Commission a fully electronic galvanized 2 x 24m x 3m Weighbridge above ground, complete with foundations, platform and control room. See per drawing No. ELM/WB 060708: Price to include the Delivery and Installation	Prov Sum	1.0	2,700,000,00		
		Overheads, charges and profit on above item 4.1.1	%	2,7000,000			
		All mechanical, electrical, civil works and instrumentation items and the weighbridge must be galvanized: Platform size: 24m x 3m Capacity: 60 000kg Divisions: 20kg					
		SOFTWARE: The software instrumentation must be connected to a standard software package and must be Microsoft Windows based and user friendly. The weighing module must consist of: Customer data base Transporters code, names and addresses Vehicle number and mass Supplier details etc. Rate to include all suitable computer equipment to monitor, record and customise record of reading.					
		CERTIFICATION The certification must include Heavy Guide Rails and Software training for 3 hours					
		LIGHTNING PROTECTION Installation of 3000Kva UPS for additional protection against power/lightning surges. this will include: 10x earth spikes 10x earth straps 1x set of excitation blitz conductors					



		Galvanizing					
		CIVIL WORKS					
TOTAL CARRIED FORWARD							

C2.2.11



CONSTRUCTION WORK AT LEEUWPOORT LANDFILL SITE

SECTION 4: CONSTRUCTION OF A WEIGHBRIDGE

C2.2.12



CONTRACT NO: ELM 04/2021 (RE- ADVERT)
CONSTRUCTION WORK AT LEEUWPOORT LANDFILL SITE

SCHEDULE OF QUANTITIES

SUMMARY OF SECTIONS

SECTION	DESCRIPTION	AMOUNT (RAND)
1	PRELIMINARY AND GENERAL
2	MAIN BUILDING
3	GUARD HOUSE AND ENTRANCE
4	CONSTRUCTION OF A WEIGHBRDGE
SUBTOTAL		

ADD CONTIGENCIES 10%

SUBTOTAL

ADD 15% VAT

TOTAL AMOUNT CARRIED TO FORM OF OFFER



C2.2.13