

## WATER CONSERVATION AND WATER DEMAND MANAGEMENT MEDIA STATEMENT

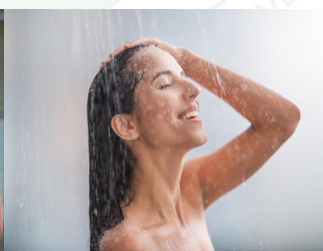
**DATE:** 12 June 2023

Demand management through water conservation is an important element of water supply planning and entails reducing the quantity of water required to meet regional demands through water use efficiency improvements and the prevention or reduction of unnecessary uses or losses of water. Water conservation contributes to the sustainability of water supply resources. Water conservation can reduce, defer, or eliminate the need to develop new water supply sources to meet current or future demands, which has the same effect as expanding the existing water supply.

Emalahleni Local Municipality (ELM) is an authorised Water Service Provider (WSP) and a Water Service Authority (WSA) under the area of its jurisdiction. The municipality is compelled by the National Water Act, Water Services Act, and the constitution of South Africa to use, protect, control and manage water resources in an effective and efficient manner.

Tips on saving water: -

- Replace old toilets with more efficient low flow toilets and flush only when necessary.
- Don't let water run continuously while brushing teeth or shaving.
- Take showers instead of baths.
- Re-use water when you can. A bucket in the shower can catch water for plants and clean-up jobs.
- Fix leaks. A faucet that drips can waste up to 3,280 gallons of water per year.
- When washing the dishes, don't let the water run while rinsing. Fill one sink with wash water and the other with rinse water. Soak pots and pans before washing.
- Use minimal detergent so you don't have to rinse as much.
- If you use a dishwasher, only do full loads and avoid extra cycles.
- Rinse vegetables in a pan of cold water or wash foods in a basin of water, rather than using running water.
- Use a carwash to wash vehicles, boats, and motorcycles.
- If you hand wash your car, use a bucket and use a positive shut off device such as a spray nozzle.
- Check the water meter and monthly bills to track water usage.



### Issued by communications Unit

For more enquiries contact

### Water Network | Water Services| Technical Services

Cnr Hofmeyer and Smuts Avenue, Bima Court Municipal Building, eMalahleni

PO BOX 3, eMALAHLENI, 1035

O +27 13 690 6310 | CALL CENTRE: +27 13 690 6222/333/444

W [www.emalahleni.gov.za](http://www.emalahleni.gov.za) | E [SkosanaPI@emalahleni.gov.za](mailto:SkosanaPI@emalahleni.gov.za)



**VISIO: TO BE A CENTRE OF INNOVATION AND SERVICE DELIVERY.**